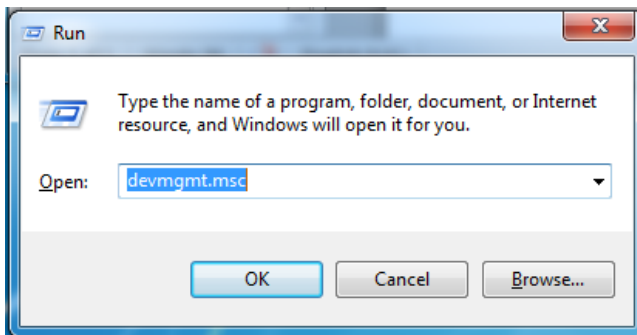


Checking your FUNcube Dongle Pro+ is recognised by Windows 7

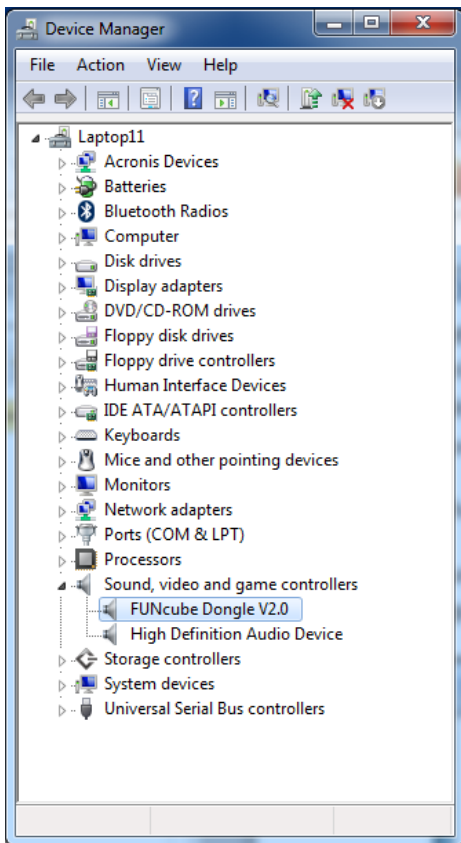
Typically the FCD+ should be recognised by the operating system and there should be no separate drivers to install. If you're encountering difficulties using your FCD+, the first step is to discover whether this is an application program problem or an operating system problem. This document covers the operating system, and is applicable to Windows 7 and Windows Vista.

Check the USB device is discovered by Windows

Run the Device Manager: to do this, holding down the Windows (⊞) button, press the R key. In the Open text box, type "devmgmt.msc" (without the quotes), and press OK.



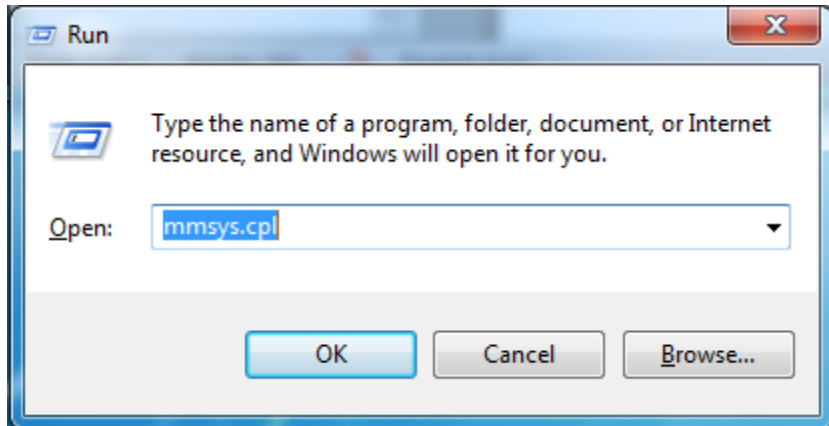
If the OS has correctly recognised the FCD+, it will be shown as "FUNcube Dongle V2.0" under the Sound, video and game controllers in the Device Manager:



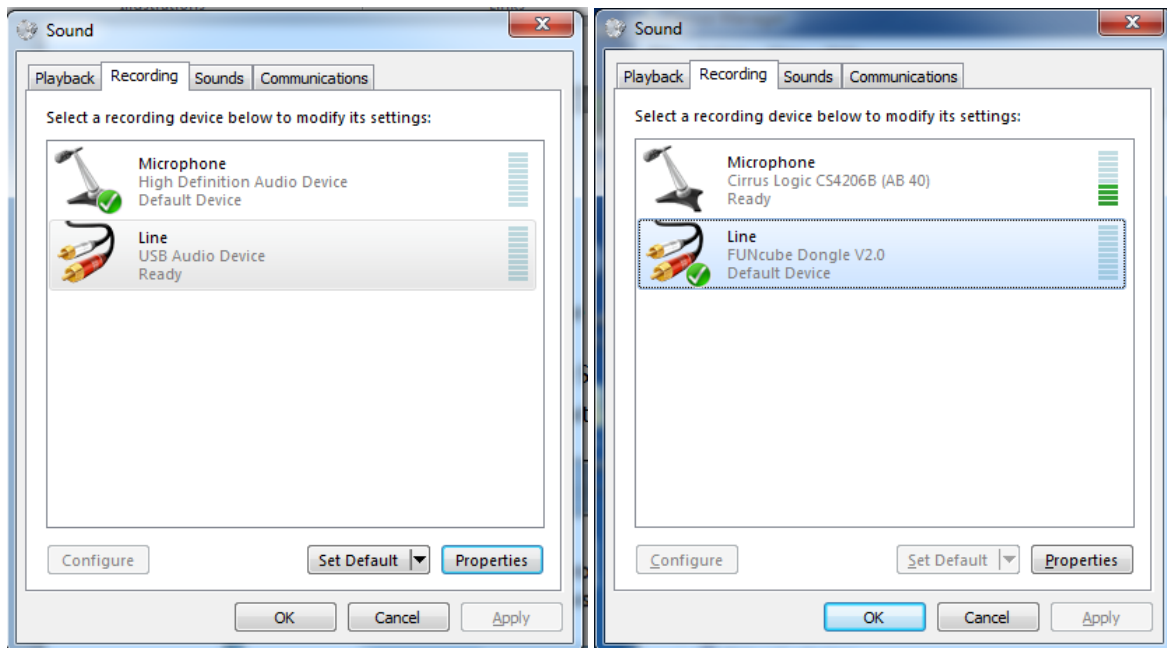
Check that the Windows sound system has recognised the FCD+

Next, we need to check that the FCD+ is recognised properly as a sound device.

This is achieved by running the Sound control panel applet. Hold down the Windows (⊞) button, press the R key. In the Open text box, type “mmsys.cpl” (without the quotes), and press OK.

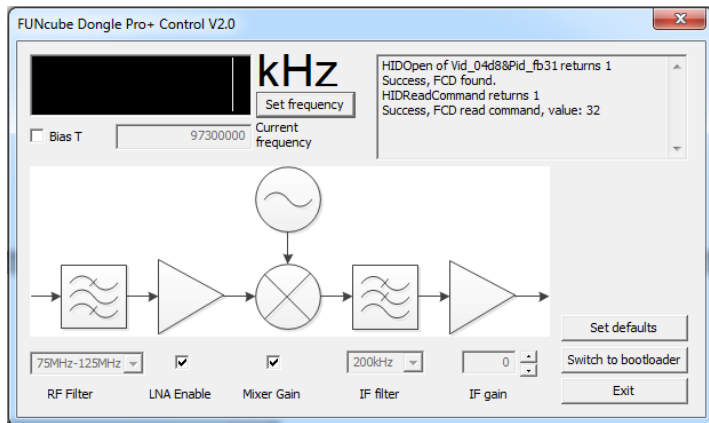


Press the Recording tab, and there should either be a “Line USB Audio Device” or a “Line FUNcube Dongle V2.0” depending on how Windows feels:

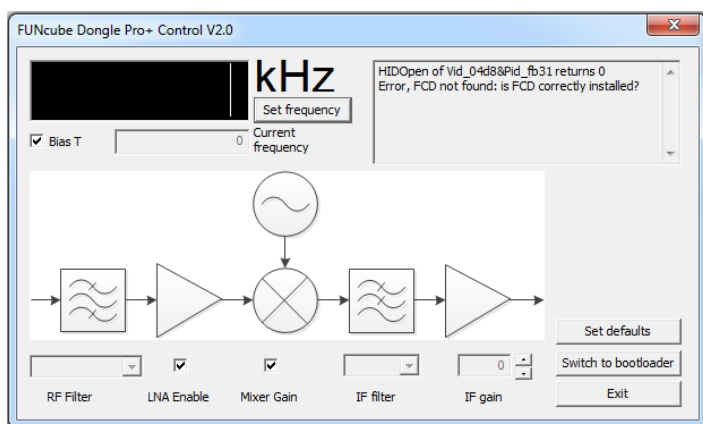


Check that the FCD+ USB tuning interface is working

Run the FCHID2001.exe program (with no other SDR programs running). This is available in the FUNCube Dongle Pro+ downloads section on <http://www.funcubedongle.com>. If the control interface is correctly working, then the messaging box at the upper right of the application's window should look like this when the FCD+ is inserted:



If the device's control interface is *not* recognised (or is removed), the messaging box shows the following:



If the above three scenarios are showing correctly, then the operating system has correctly identified the FCD+ and it is recommended that the application configuration is analysed if the FCD+ appears not to be functioning.

If all else fails...

It is possible that the drivers did not properly install right at the beginning when the FCD+ was first inserted into the PC. This might happen in particular if the device was removed part way through the initial installation process, which can take a minute or so to complete in some circumstances on the first insertion into a given USB port.

This will mean uninstalling both the Audio and the HID component, physically removing the device for a few seconds, and then re-inserting to allow reinstallation. This quite a fiddly process to achieve, and it will be covered in another article.