

# WRPlus V1.04 Configuration

## For Use with FCD

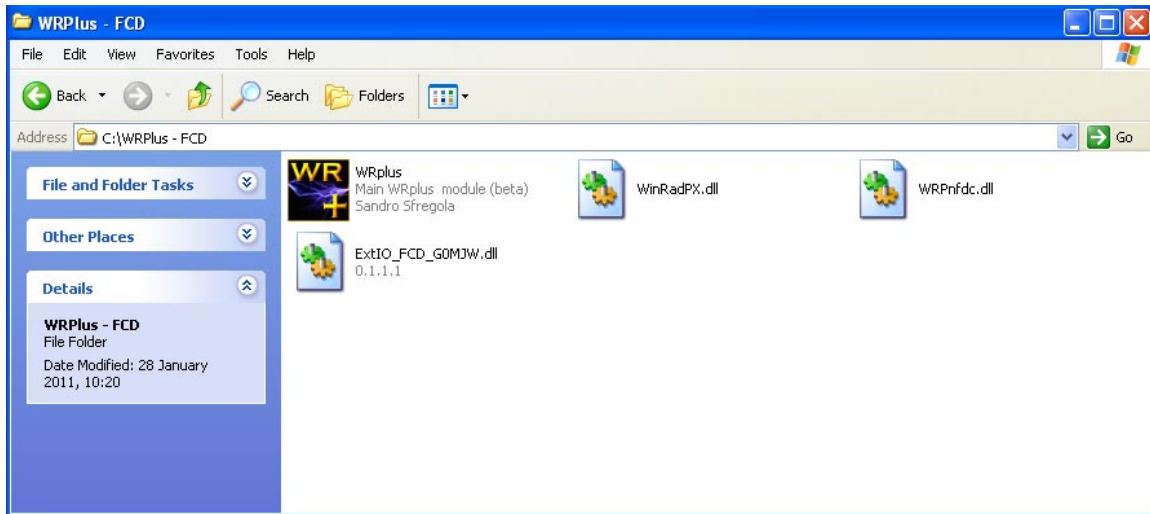
If you are confident your FCD is working correctly please skip to “Firmware”. If not, before proceeding with any of the following setup, please test your FCD. It is suggested that you use the Spectravue program. A setup guide can be found in the files section of the FunCube User Group or Download section of the FCD web site.

### Firmware

Your FCD must have 18c (or later) firmware installed to function correctly in this configuration. If not, you **MUST** update it. The firmware and an update guide are available from the locations given above.

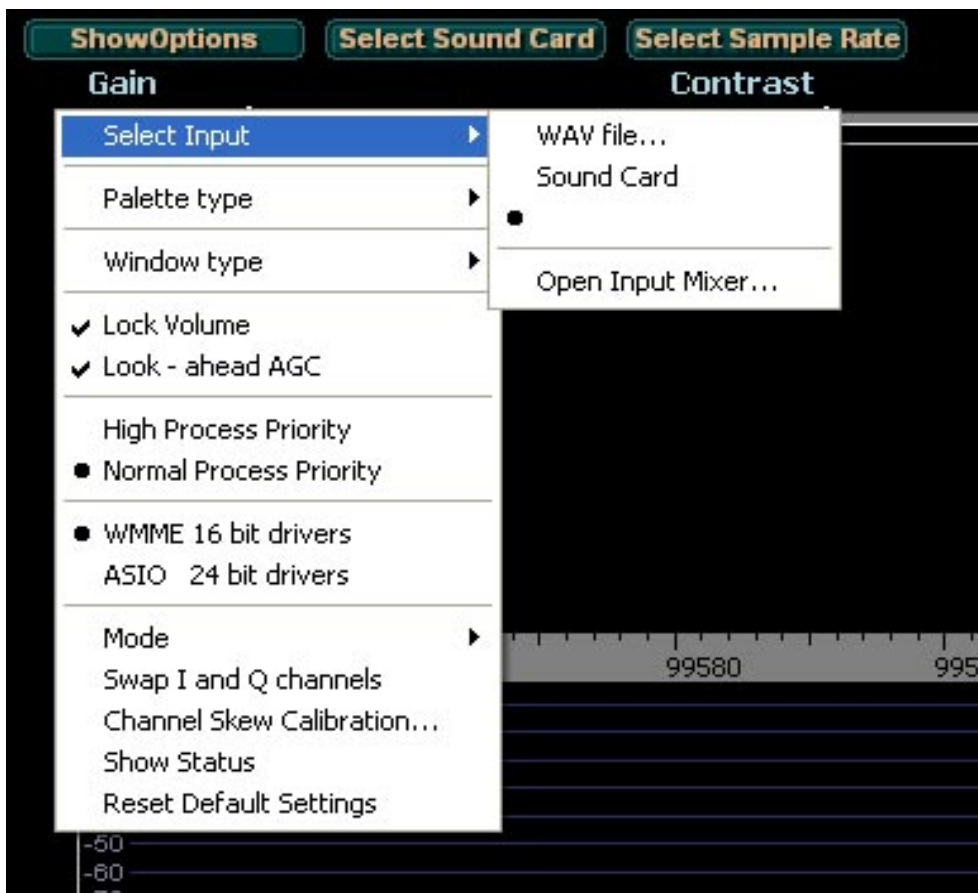
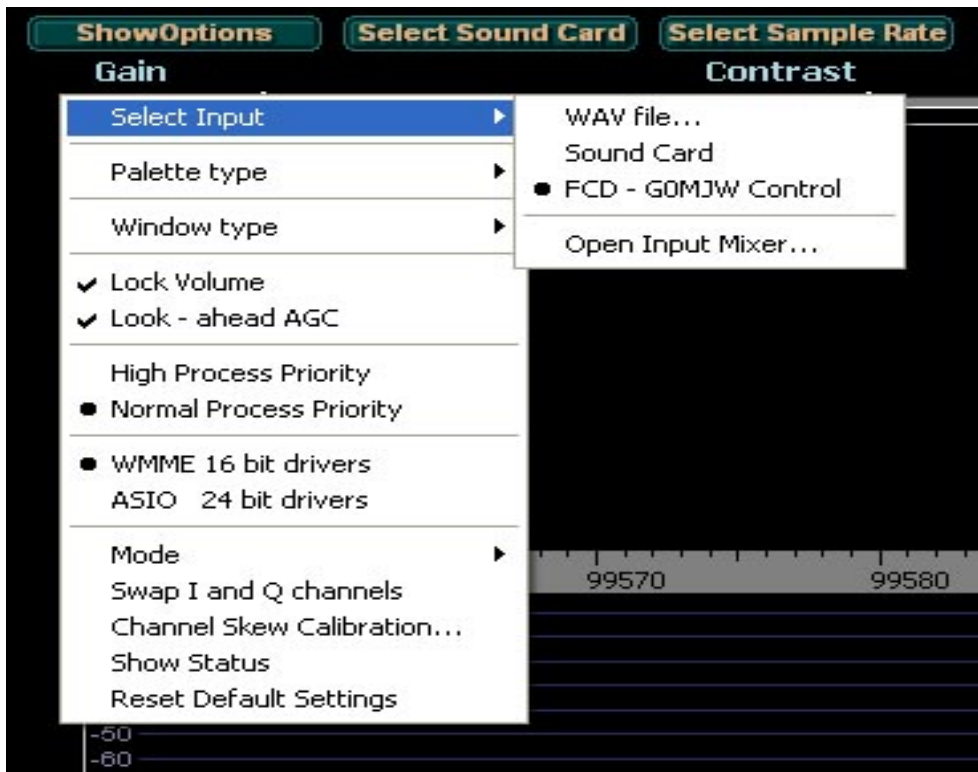
### Download

From the FunCube User Group, download the WRPlus V1.04 zip file. Create a new, empty folder and extract the WRPlus files to this folder. Download the ExtIO\_FCD\_G0MJW.dll file (657KB) from the FunCube User Group and place in the same folder. The contents of the folder should include the files shown below. There will also be a history.txt file and two pdf files of WRPlus instructions.

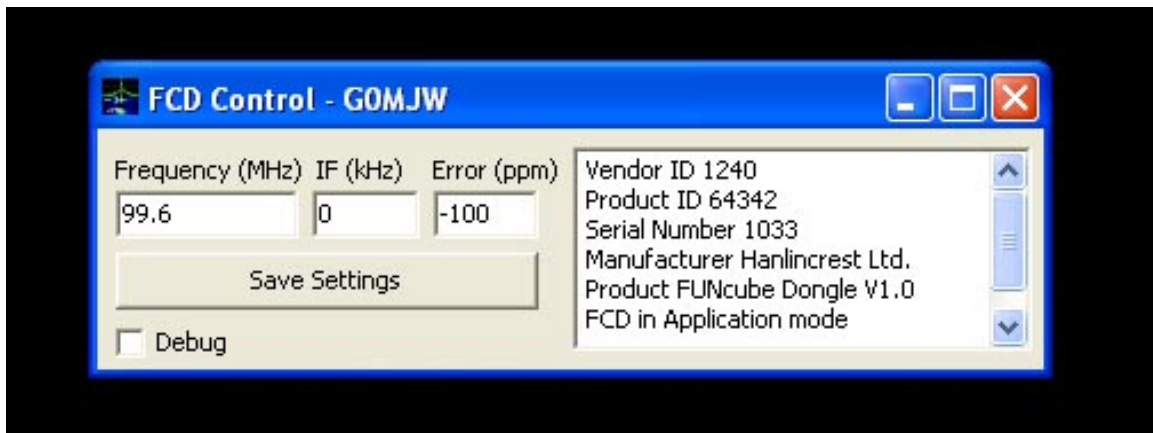


From your folder run WRPlus and click on “Show Options” at the top left and then “Select Input”. You should see one of the two screens shown on the next page.

**Important** - You will notice that in the first “FCD – G0MJW Control” appears in the “Select Input” box and in the second the line appears to be blank. Don’t worry about this, there are two slightly different versions of the ExtIO file, both function correctly.

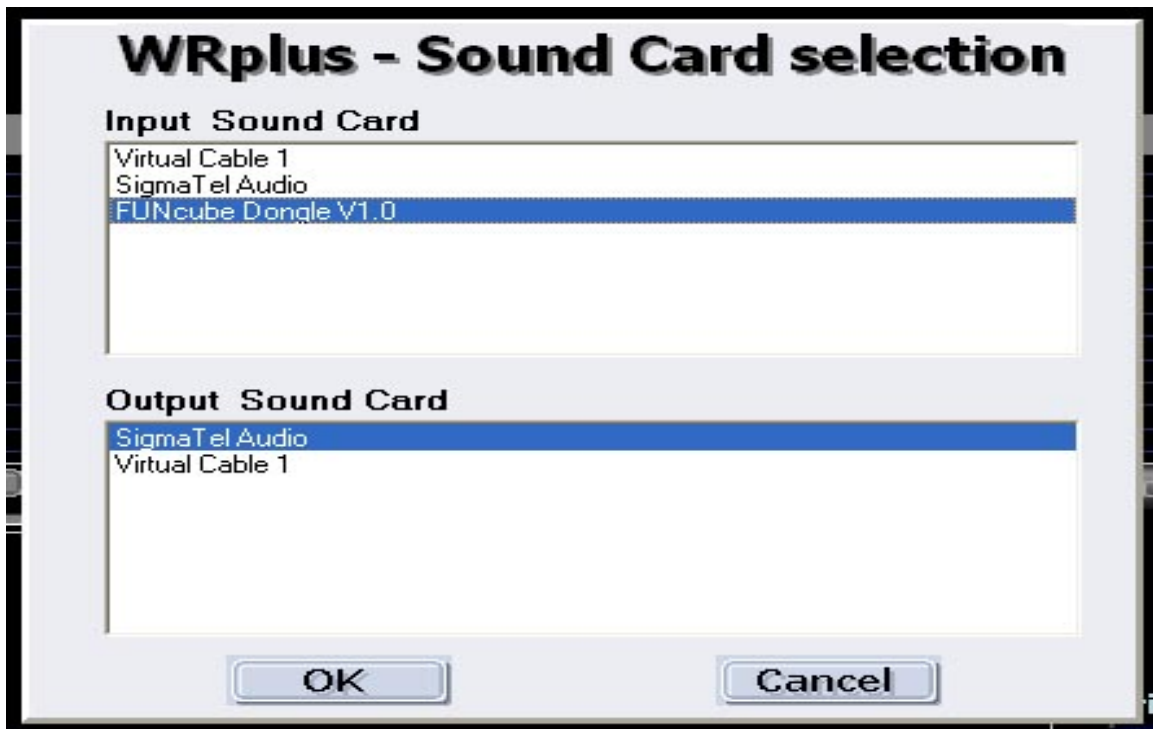


Select the line by clicking on it, the black dot shows it's selected and the following should appear on the screen. The numbers in the "Frequency", "IF" and "Error" boxes may differ but the information displayed should be similar.



Note: Depending on what screen resolution you are using this box may disappear as soon as you move on. It may also not appear on subsequent starts of WRPlus. Do not worry, it is still active.

Next click on "Select Sound Card", the box shown below will open.



The content may not be identical but FUNcube Dongle V1.0 will appear in the top section and the bottom section will show your system sound card. Select these two items and click OK.

Finally click on “Select Sample Rate”. The following menu will be seen.



Make the selections as shown and click on “Close”

That completes the setup of WRPlus for use with the FCD and ExtIO control utility.

See next page for operation.

## Using WRPlus with the FCD

At this point it is suggested that unless you are familiar with the operation of WRPlus you take a few moments to read the instructions which were included as pdf files in the original download.

Click on “Start” to set WRPlus running. A waterfall display should be seen and noise should be heard from your loudspeakers.

The centre frequency of the FCD is set via the “LO”. The example below shows this set to 99.60MHz. The frequency of the FCD changes automatically as this is changed.



Remember, signals at the centre frequency selected for the FCD always appear at the centre of the spectrum display.

The “Tune” frequency shows the frequency of the signal you are actually listening to.

### Important Note

For optimum results WRPlus requires your display resolution to be set to 1024 \* 768 or higher. The use of 1024 \* 768 may prohibit the display of all the windows you require however it will not prevent correct operation.